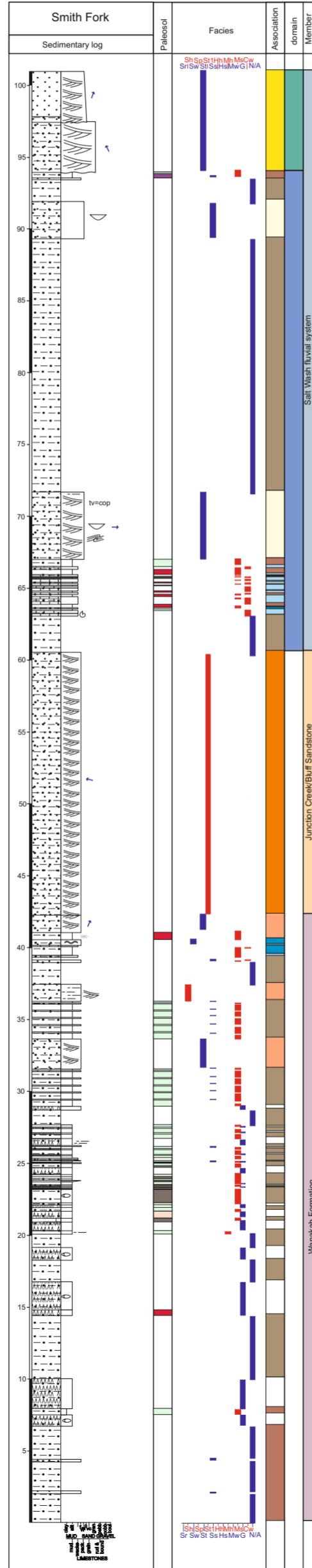
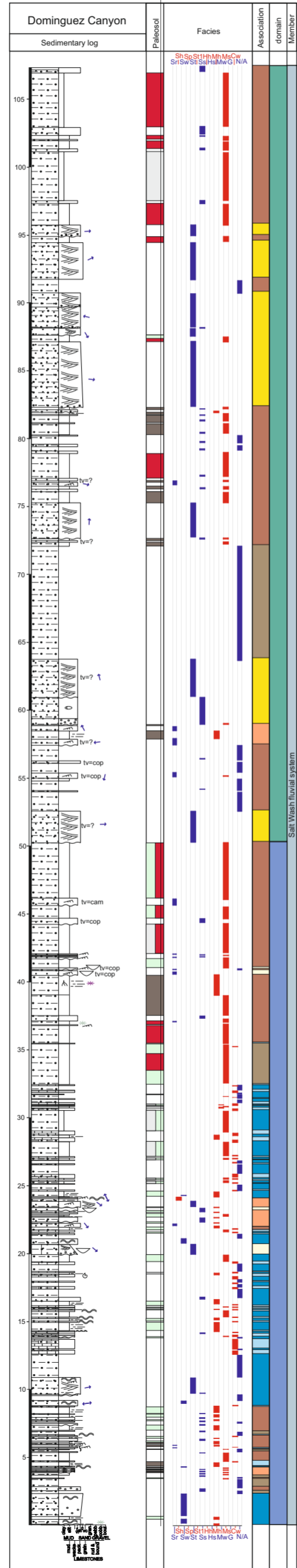
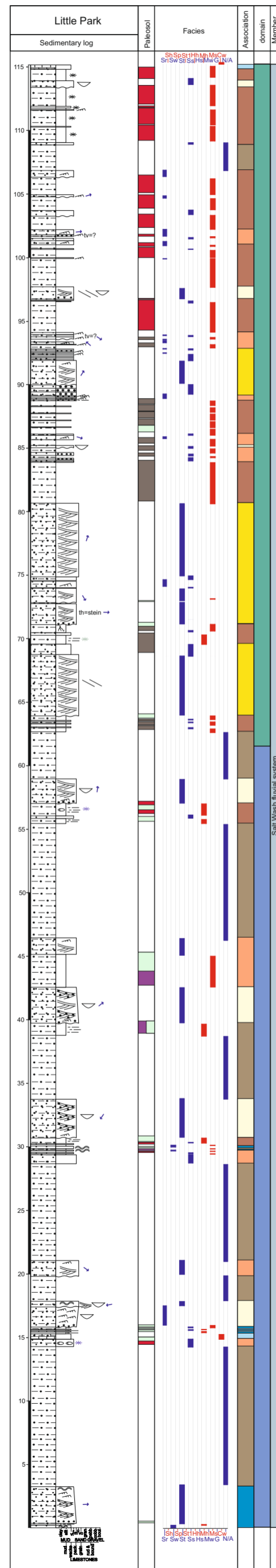


Pullout C- Also on appendix CD



- ### Symbols
- Climbing ripple lamination
 - Crest orientation
 - Paleocurrent orientation (general direction)
 - Channel edge orientation
 - Load casts
 - Horizontal planar lamination
 - Trough cross-bedding
 - Planar cross-bedding
 - Wave ripple cross-lamination
 - Current ripple cross-lamination
 - Lateral accretion surfaces
 - Truncation surfaces
 - Mudclast
 - Intraclasts
 - Mudclast lining cross-bedding
 - Grains lining cross-bedding
 - Mudcracks
 - Soft sediment deformation
 - Convolute lamination/bedding
 - Tracks (Dinoturbation)
 - Root structures
 - Rhizoliths
 - Logs
 - In-situ tree stumps
 - Vertebrates
 - Shell material
 - Nodules and concretions
 - Coalesced nodules
 - Grooves
 - Horizontal burrows
 - Vertical burrows
 - Bioturbation
 - Trace fossils
 - Stromatolites
 - Mottling
 - Mud drapes
 - Gypsum crystals
 - Channel geometry
 - Conglomerate lenses/bars
 - Sandstone lenses/bars
 - Mudstone lenses/bars
 - Sandstone stringer
 - Sample name

- ### Lithology
- Sandstone
 - Mudstone
 - Claystone
 - Siltstone
 - Conglomerate
 - Limestone
 - Gypsum
- ### Facies associations
- Laterally amalgamated channel-fill
 - Isolated channel-fill
 - Undifferentiated floodplain
 - Mud-dominated floodplain
 - Sand-dominated floodplain
 - Aeolian
 - Gypsiferous lake
 - Clastic lake
 - Lacustrine carbonates
- ### Domain
- proximal
 - medial
 - distal
- ### Burrows
- AMB = adhesive meniscate burrows
 - Stein = Steinichnus
 - Anc = Ancorichnus isp
 - Cop = Coprinisphaera
 - Larvae = aquatic insect larvae
 - Cole:staph = coleoptera: staphylinidae
 - Coch = Cochlinus
 - wasp = extant wasp
 - MBS = mammal burrow systems
 - Cylin = cylindrichum
 - Cam = Camborygma
 - Scoy = Scoyenia

